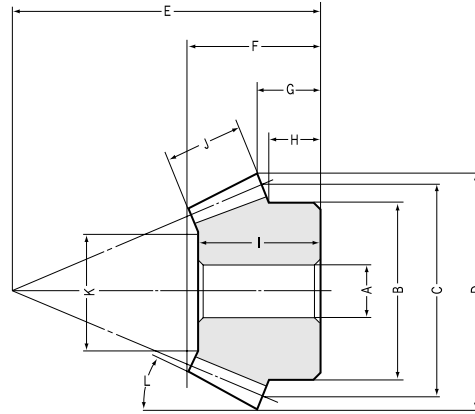




SUB Stainless Steel Bevel Gears Modules 1.5~3



B3 Shape

Gear Ratio 1.5 ■ Modules 1.5~3

Catalog No.	Module	No. of teeth	Bore	Hub dia.	Pitch dia.	Outside dia.	Mounting distance	Total length	Crown to back length	Hub width	Length of bore	Face width
	<i>m</i>	<i>z</i>	A _{H7}	B	C	D	E	F	G	H	I	J
SUB1.5-3020 SUB1.5-2030	1.5	30	10	30	45	46.24	28	18.53	13.93	8	16	9
		20	8	25	30	33.13	33	18.63	11.54	8.83	17	
SUB2 -3020 SUB2 -2030	2	30	10	35	60	61.65	40	26.87	21.24	15	23	11
		20	10	35	40	44.18	45	25.06	16.39	13.33	22	
SUB2.5-3020 SUB2.5-2030	2.5	30	15	45	75	77.07	50	34.22	26.55	18	30	15
		20	12	40	50	55.22	55	31.06	19.24	14.16	28	
SUB3 -3020 SUB3 -2030	3	30	15	60	90	92.48	55	35.56	26.86	17	31	17
		20	15	50	60	66.27	70	40.48	27.09	21.66	37	

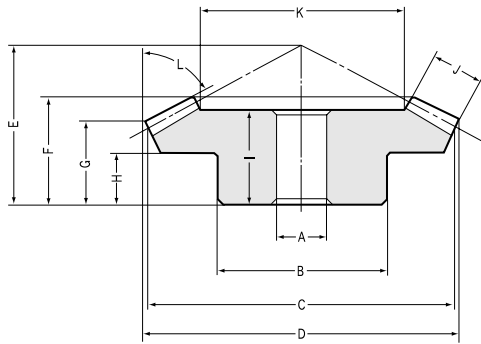
Gear Ratio 2 ■ Modules 1.5~3

SUB1.5-4020 SUB1.5-2040	1.5	40	10	38	60	60.88	35	25.01	20.88	15	22	10
		20	8	25	30	33.61	46	25.54	16.9	14.75	24	
SUB2 -4020 SUB2 -2040	2	40	12	50	80	81.17	45	32.37	26.17	18	27	15
		20	12	32	40	44.81	60	34.16	21.2	18	32	
SUB2.5-4020 SUB2.5-2040	2.5	40	15	60	100	101.46	55	39.73	31.46	20	35	20
		20	12	40	50	56.02	75	43.78	26.5	22.5	41	
SUB3 -4020 SUB3 -2040	3	40	20	70	120	121.76	65	45.85	36.76	24	38	22
		20	16	50	60	67.22	90	50.81	31.8	27.5	47	

Gear Ratio 3 ■ Modules 1.5~3

SUB1.5-4515 SUB1.5-1545	1.5	45	10	36	67.5	68.06	28	20.44	17.59	11	17	10
		15	8	18	22.5	26.51	47	23.19	13.92	12.5	22.5	
SUB2 -4515 SUB2 -1545	2	45	12	60	90	90.75	40	30.4	26.12	17	26	15
		15	10	24	30	35.35	60	29.8	15.89	14	29	
SUB2.5-4515 SUB2.5-1545	2.5	45	15	60	112.5	113.43	50	38.35	32.65	22	35	20
		15	12	30	37.5	44.18	75	38.4	19.86	17.5	37	
SUB3 -4515 SUB3 -1545	3	45	20	80	135	136.12	55	40.74	34.18	20	35	23
		15	15	38	45	53.02	90	45.17	23.84	21.33	43	

CAUTION: Dimensions of the outside diameter, the overall length and crown to back length are all theoretical values, and some differences will occur due to the corner chamfering of the gear tips.



B4 Shape

Specifications

Precision grade	JIS B 1704 grade 3	Tooth hardness	Less than 187HB
Gear teeth	Gleason	Surface treatment	—
Pressure angle	20°	Tooth surface finish	Cut
Material	SUS303	Datum reference surface for gear cutting	Bore
Heat treatment	—	Secondary Operations	Possible

*Available on special order: Same gear made from SUS304.

Holding surface dia. K	Tip angle L	Shape	Allowable torque (N·m) NOTE 1		Allowable torque (kgf·m)		Backlash (mm)	Weight (kgf)	Catalog No.
			Bending strength	Surface durability	Bending strength	Surface durability			
27.37 17.05	59°16' 38°16'	B4 B3	3.215 2.231	0.4648 0.3099	(0.3278) (0.2275)	(0.0474) (0.0316)	0.05 ~ 0.15	0.12 0.06	SUB1.5-3020 SUB1.5-2030
37.56 21.34	59°16' 38°16'	B4 B3	7.22 5.01	1.081 0.7208	(0.7362) (0.5109)	(0.1102) (0.0735)	0.06 ~ 0.16	0.26 0.16	SUB2 -3020 SUB2 -2030
45.61 27.42	59°16' 38°16'	B4 B3	14.89 10.33	2.277 1.518	(1.518) (1.053)	(0.2322) (0.1548)	0.07 ~ 0.17	0.55 0.28	SUB2.5-3020 SUB2.5-2030
57.14 34.71	59°16' 38°16'	B4 B3	24.83 17.23	3.872 2.581	(2.532) (1.757)	(0.3948) (0.2632)	0.08 ~ 0.18	0.95 0.55	SUB3 -3020 SUB3 -2030

Pitch Angle Gear: 56°19' Pinion: 33°41'

39.64 17.28	65°36' 30°29'	B4 B3	5.232 2.635	0.7894 0.3952	(0.5335) (0.2687)	(0.0805) (0.0403)	0.05 ~ 0.15	0.27 0.09	SUB1.5-4020 SUB1.5-2040
48.46 20.92	65°36' 30°29'	B4 B3	13.35 6.721	2.074 1.037	(1.361) (0.6854)	(0.2115) (0.1057)	0.06 ~ 0.16	0.62 0.2	SUB2 -4020 SUB2 -2040
60.28 24.56	65°36' 30°29'	B4 B3	27.07 13.63	4.292 2.147	(2.76) (1.39)	(0.4377) (0.2189)	0.07 ~ 0.17	1.23 0.4	SUB2.5-4020 SUB2.5-2040
73.81 29.61	65°36' 30°29'	B4 B3	44.44 22.38	7.191 3.595	(4.532) (2.282)	(0.7333) (0.3666)	0.08 ~ 0.18	1.9 0.7	SUB3 -4020 SUB3 -2040

Pitch Angle Gear: 63°26' Pinion: 26°34'

46.58 14.75	73°27' 22°17'	B4 B3	5.697 1.966	0.7218 0.2403	(0.5809) (0.2005)	(0.736) (0.0245)	0.05 ~ 0.15	0.25 0.04	SUB1.5-4515 SUB1.5-1545
59.04 19.13	73°27' 22°17'	B4 B3	14.57 5.032	1.901 0.6335	(1.486) (0.5131)	(0.1938) (0.0646)	0.06 ~ 0.16	0.81 0.1	SUB2 -4515 SUB2 -1545
72.84 20.51	73°27' 22°17'	B4 B3	29.61 10.22	3.942 1.314	(3.019) (1.042)	(0.402) (0.134)	0.07 ~ 0.17	1.3 0.2	SUB2.5-4515 SUB2.5-1545
88.18 22.53	73°27' 22°17'	B4 B3	49.87 17.21	6.768 2.256	(5.085) (1.755)	(0.6901) (0.23)	0.08 ~ 0.18	2.3 0.35	SUB3 -4515 SUB3 -1545

Pitch Angle Gear: 71°34' Pinion: 18°26'

NOTE 1: The allowable torques shown in the table are the calculated values according to the assumed usage conditions. Please see page 229 for more details.