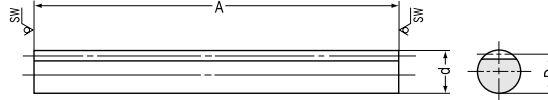
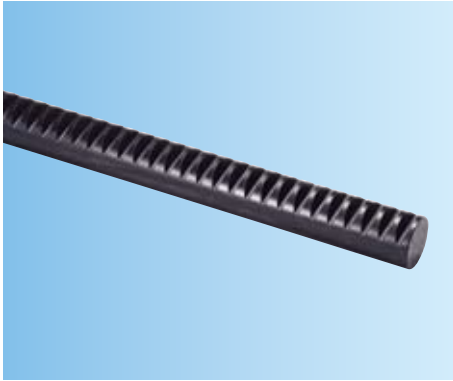




SROCP CP Round Racks Circular Pitches 2.5~10



R2 Shape

*SW is saw bale finish.

Specifications

Precision grade	KHK R 001 grade 4
Gear teeth	Standard full depth
Pressure angle	20°
Material	S45C-D
Heat treatment	Stress relief annealing
Tooth hardness	89~95HRB
Surface treatment	Black oxide
Tooth surface finish	Cut
Datum reference surface for gear cutting	—
Secondary Operations	Possible

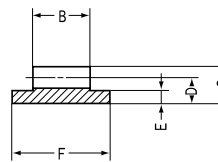
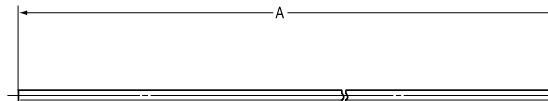
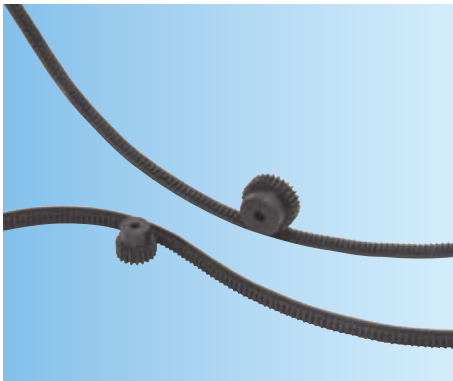
CP 2.5~10

Catalog No.	Pitch mm (m)	Total length	Outside dia.	Height to pitch line	Effective	Shape	Allowable force (N) NOTE 1		Allowable force (kgf)		Weight (kgf)
							Bending strength	Surface durability	Bending strength	Surface durability	
SROCP2.5- 500	CP2.5 (0.7958)	505	10	9.2	200	R2	473.5	91.83	(48.28)	(9.364)	0.58
SROCP 5- 500	CP5 (1.5915)	505	15	13.4	99	R2	1652	324.4	(168.5)	(33.08)	0.65
SROCP 10-1000	CP10 (3.1831)	1010	30	26.81	99	R2	6607	1297	(673.7)	(132.3)	3.6

NOTE 1: The allowable forces shown in the table are the calculated values according to the assumed usage conditions. Please see page 181 for more details.



FRCP CP Metal Flexible Racks Circular Pitch 5



R3 Shape

Specifications

Precision grade	KHK R 001 grade 8
Gear teeth	Standard full depth
Pressure angle	20°
Material	SS400
Heat treatment	—
Tooth hardness	Less than 187HB
Surface treatment	Black oxide
Tooth surface finish	Cut
Datum reference surface for gear cutting	Bottom surface
Secondary Operations	Possible

CP 5

Catalog No.	Pitch mm (m)	Total length	Face width	Height NOTE 2	Height to pitch line	Thickness of base	Width of flange NOTE 2	Effective No. of teeth	Shape	Allowable force (N) NOTE 1		Weight (kgf)
										Bending strength	Bending strength	
FRCP5-2000	CP5 (1.5915)	2000	10	6	4.41	2	17	397	R3	800.9	(81.65)	0.9
FRCP5-3000	CP5 (1.5915)	3000	10	6	4.41	2	17	597	R3	800.9	(81.65)	1.36
FRCP5-4000	CP5 (1.5915)	4000	10	6	4.41	2	17	797	R3	800.9	(81.65)	1.82

CAUTION: When using the metal flexible rack with a 20 tooth pinion, allow a minimum radius of curvature of 150mm for the teeth on the exterior and 300mm for the teeth in the interior side.

CAUTION: These metal flexible racks are not suitable for applications where positioning accuracy is required.

NOTE 1: The allowable forces shown in the table are the calculated values according to the assumed usage conditions. Please see page 181 for more details.

NOTE 2: The tolerance of the height (C) is ± 0.15 and the tolerance of the width of the base (F) is ± 0.1 .