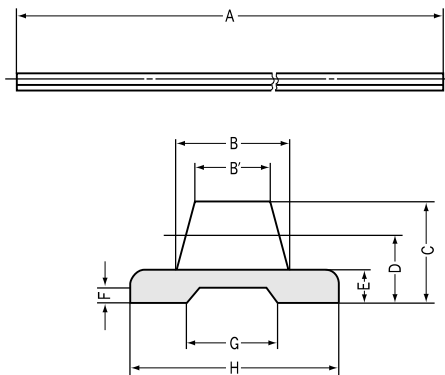
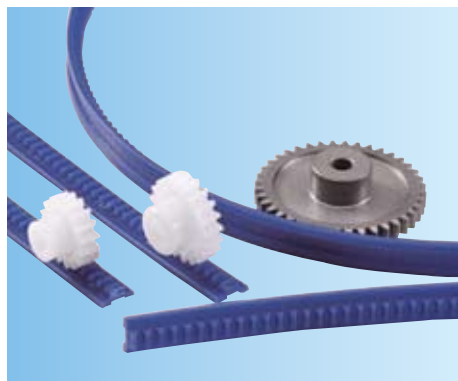




DR Molded Flexible Racks Modules 0.8~2



R4 Shape

Specifications

Precision grade	KHK R 001 grade 8
Gear teeth	Standard full depth
Pressure angle	20°
Material	DURACON (M25-44)
Heat treatment	—
Tooth hardness	110~120HRR
Surface treatment	—
Tooth surface finish	Molded (continuous extrusion)
Datum reference surface for gear cutting	Bottom surface
Secondary Operations	Possible

Modules 0.8~2

Catalog No.	Module m	Total length A	Face width B	Face width B'	Height C	Height to pitch line D	Thickness of base E	Depth of groove F	Width of groove G	Width of base H	Effective No. of teeth	Shape	Allowable force NOTE 1		Weight (kgf)
													Bending strength (N)	Bending strength (kgf)	
DRO.8-2000	0.8	2000	3.8	3	3.3	2.5	1.5	(0.7)	(3.7)	8	—	R4	111.8	(11.4)	0.1
DR1 -2000	1	2000	5	4	4.3	3.3	2	(0.9)	(4.9)	10	—	R4	160.9	(16.41)	0.15
DR1.5-2000	1.5	2000	6.5	5	5.7	4.2	2.3	(1)	(8)	12	—	R4	161.4	(16.46)	0.2
DR2 -2000	2	2000	8	6	7	5	2.5	(1.1)	(10.1)	15	—	R4	264.9	(27.01)	0.3

CAUTION: To use the molded flexible rack with a 20 tooth pinion, the radius of curvature for an external or internal arc must be greater than 150mm.

CAUTION: Molded plastic gears are inherently less precise than metal gears. The table on the right shows the dimensional tolerance of these racks. The overall length tolerance is ± 10 mm.

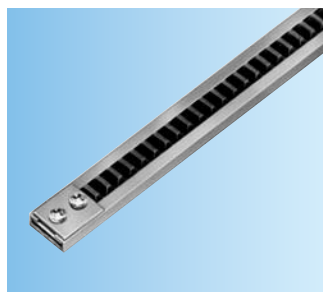
CAUTION: Molded flexible racks are not suitable for use when positioning accuracy is need.

NOTE 1: Allowable transmission forces shown in the table are the values calculated from the Lewis formula. The allowable bending forces are the value for Duracon 90.

Dimensional tolerance table (unit: mm)

Range	Tolerance
Below 3	± 0.2
3 up to 6	± 0.25
6 up to 10	± 0.3
10 up to 18	± 0.35
18 up to 30	± 0.4
30 & up	± 0.5

*** We also accept orders for longer racks up to 50m as specials**

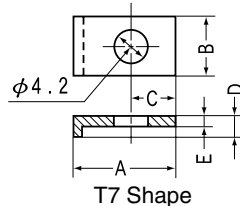
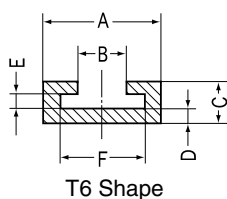
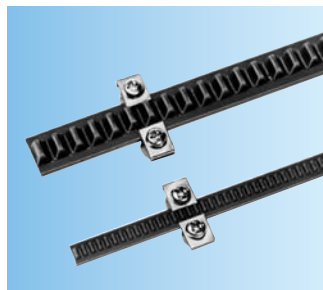


Rack Guide Rails Material: Aluminum (A6063S-T5) Total length: 1000mm

Catalog No.	A	B	C	D	E	F	Shape
ARL-0.8	10.3	4.4	4.7	2	1.7	8.3	T6
ARL-1	12.3	5.6	5.2	2	2.2	10.3	T6
ARL-1.5	14.3	7.2	5.5	2	2.5	12.3	T6
ARL-2	17.3	8.8	6.2	2.5	2.7	15.3	T6

Rack Clamps Material: SS400 (Unichromic plating)

Catalog No.	A	B	C	D	E	F	Shape
SRS-1	10.2	8	4.5	2.7	1.2	—	T7
SRS-2	11.4	8	5.6	3.9	1.4	—	T7



Normal bending and dimensional tolerance table (unit: mm)

Range	Grade B
Below 6	± 0.3
6 up to 30	± 0.5
30 up to 120	± 0.8
120 up to 400	± 1.2
400 up to 1000	± 2
1000 up to 2000	± 3