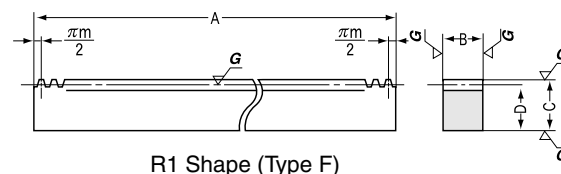
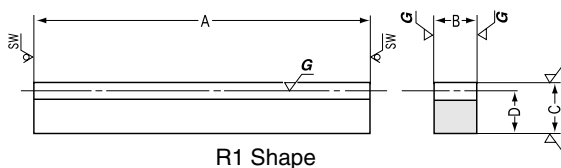
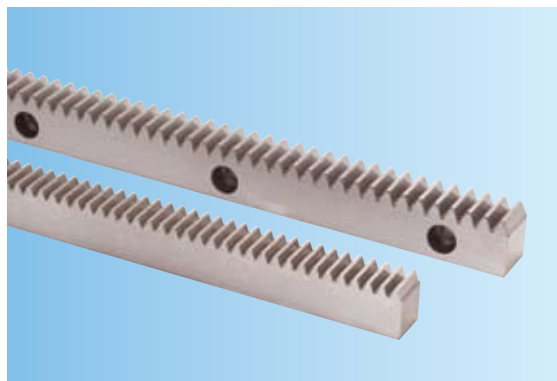




# KRG(F)(D) Ground Racks Modules 1~3



\*SW is saw blade finish.

## Modules 1~3 100 Racks

Catalog No.	Module m	Total length A	Face width B	Height C	Height to pitch line D	Effective No. of teeth	Shape	Allowable force (N) NOTE 1		Allowable force (kgf)	
								Bending strength	Surface durability	Bending strength	Surface durability
KRG1 -100	1	98	10	15	14	29	R1	1533	640.8	( 156.3 )	( 65.34 )
KRG1.5-100	1.5	101	15	20	18.5	20	R1	3450	1442	( 351.8 )	( 147 )
KRG2 -100	2	98	20	25	23	14	R1	6133	2563	( 625.4 )	( 261.4 )
KRG2.5-100	2.5	100	25	30	27.5	11	R1	9582	4005	( 977.1 )	( 408.4 )
KRG3 -100	3	101	30	35	32	9	R1	13800	5767	( 1407 )	( 588.1 )

## Modules 1~3 500 Racks

Catalog No.	Module m	Total length A	Face width B	Height C	Height to pitch line D	Effective No. of teeth	Shape	Allowable force (N) NOTE 1		Allowable force (kgf)	
								Bending strength	Surface durability	Bending strength	Surface durability
KRG1 -500	1	505	10	15	14	159	R1	1533	640.8	( 156.3 )	( 65.34 )
KRG1.5-500	1.5	505	15	20	18.5	106	R1	3450	1442	( 351.8 )	( 147 )
KRG2 -500	2	505	20	25	23	80	R1	6133	2563	( 625.4 )	( 261.4 )
KRG2.5-500	2.5	505	25	30	27.5	63	R1	9582	4005	( 977.1 )	( 408.4 )
KRG3 -500	3	505	30	35	32	53	R1	13800	5767	( 1407 )	( 588.1 )

## Modules 1~3 1000 Racks Type F

Catalog No.	Module m	Total length A	Face width B	Height C	Height to pitch line D	Effective No. of teeth	Shape	Allowable force (N) NOTE 1		Allowable force (kgf)	
								Bending strength	Surface durability	Bending strength	Surface durability
KRGF1 -1000	1	999.03	10	20	19	318	R1	1533	640.8	( 156.3 )	( 65.34 )
KRGF1.5-1000	1.5	999.03	15	20	18.5	212	R1	3450	1442	( 351.8 )	( 147 )
KRGF2 -1000	2	1005.31	20	25	23	160	R1	6133	2563	( 625.4 )	( 261.4 )
KRGF2.5-1000	2.5	1005.31	25	30	27.5	128	R1	9582	4005	( 977.1 )	( 408.4 )
KRGF3 -1000	3	999.03	30	35	32	106	R1	13800	5767	( 1407 )	( 588.1 )

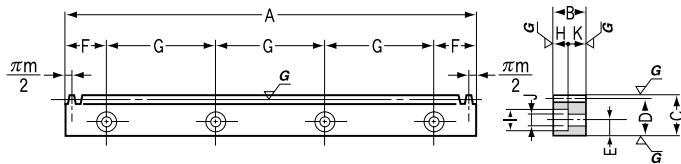
## Modules 1~3 500 Racks Type D

Catalog No.	Module m	Total length A	Face width B	Height C	Height to pitch line D	Effective No. of teeth	Mounting hole dimensions NOTE 2			No. of mounting holes	Mounting screw size
							E	F	G		
KRGD1 -500	1	499.51	10	15	14	159	6	39.75	140	4	M 4
KRGD1.5-500	1.5	499.51	15	20	18.5	106	8	39.75	140	4	M 5
KRGD2 -500	2	502.65	20	25	23	80	10	41.32	140	4	M 6
KRGD2.5-500	2.5	502.65	25	30	27.5	64	12	41.32	140	4	M 8
KRGD3 -500	3	499.51	30	35	32	53	14	39.75	140	4	M10

**CAUTION:** Please follow the "Application Hints" on page 158 to ensure precision during assembly.

**NOTE 1:** The allowable forces shown in the table are the calculated values according to the assumed usage conditions. Please see page 155 for more details.

**NOTE 2:** The dimensions "E" and "F" have the general tolerance. We recommend that you secure the rack after assembly by means of dowel pins.



R1 Shape (Type D)

## Specifications

Precision grade	<b>KHK R 001 grade 1</b>	Tooth hardness	<b>250~285HB</b>
Gear teeth	<b>Standard full depth</b>	Surface treatment	—
Pressure angle	<b>20°</b>	Tooth surface finish	<b>Ground</b>
Material	<b>SCM440</b>	Datum reference surface for gear grinding	<b>Bottom surface</b>
Heat treatment	<b>Thermal refining only</b>	Secondary Operations	<b>Possible</b>

Weight (kgf)	Catalog No.
0.11	<b>KRG1 -100</b>
0.23	<b>KRG1.5-100</b>
0.36	<b>KRG2 -100</b>
0.55	<b>KRG2.5-100</b>
0.78	<b>KRG3 -100</b>

Weight (kgf)	Catalog No.
0.55	<b>KRG1 -500</b>
1.2	<b>KRG1.5-500</b>
1.9	<b>KRG2 -500</b>
2.6	<b>KRG2.5-500</b>
3.8	<b>KRG3 -500</b>

Weight (kgf)	Catalog No.
1.5	<b>KRGF1 -1000</b>
2.2	<b>KRGF1.5-1000</b>
3.6	<b>KRGF2 -1000</b>
5.4	<b>KRGF2.5-1000</b>
7.5	<b>KRGF3 -1000</b>

Counterbore dimensions				Shape	Allowable force (N) <small>NOTE 1</small>		Allowable force (kgf)		Weight (kgf)	Catalog No.
H	I	J	K		Bending strength	Surface durability	Bending strength	Surface durability		
5	8	4.5	5	R1	1533	640.8	( 156.3 )	( 65.34 )	0.55	<b>KRGD1 -500</b>
6	10	6	9	R1	3450	1442	( 351.8 )	(147 )	1	<b>KRGD1.5-500</b>
7	11	7	13	R1	6133	2563	( 625.4 )	(261.4 )	1.7	<b>KRGD2 -500</b>
9	14	9	16	R1	9582	4005	( 977.1 )	(408.4 )	2.6	<b>KRGD2.5-500</b>
11	17.5	11	19	R1	13800	5767	(1407 )	(588.1 )	3.6	<b>KRGD3 -500</b>