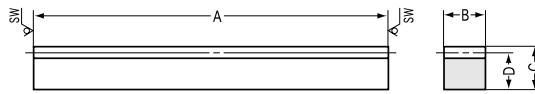


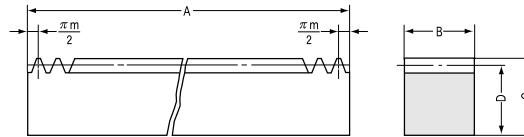


SUR(F)(D) Stainless Steel Racks Modules 1~4



R1 Shape

*SW is saw blade finish.



R1 Shape (Type F)

Modules 1~4

Catalog No.	Module m	Total length A	Face width B	Height C	Height to pitch line D	Effective No. of teeth	Shape	Allowable force (N) NOTE 1		Allowable force (kgf)	
								Bending strength	Surface durability	Bending strength	Surface durability
SUR1 - 500	1	505	10	12	11	159	R1	457.4	99.44	(46.64)	(10.14)
SUR1.5- 500	1.5	505	15	20	18.5	105	R1	1029	236.8	(104.9)	(24.15)
SUR2 - 500	2	505	20	25	23	79	R1	1829	436	(186.5)	(44.46)
SUR2.5- 500	2.5	505	25	30	27.5	63	R1	2859	698.3	(291.5)	(71.21)
SUR3 - 500	3	505	30	35	32	52	R1	4116	1025	(419.7)	(104.5)
SUR4 - 500	4	505	40	45	41	39	R1	7318	1871	(746.2)	(190.8)
SUR1.5-1000	1.5	1010	15	20	18.5	212	R1	1029	236.8	(104.9)	(24.15)
SUR2 -1000	2	1010	20	25	23	160	R1	1829	436	(186.5)	(44.46)
SUR2.5-1000	2.5	1010	25	30	27.5	128	R1	2859	698.3	(291.5)	(71.21)
SUR3 -1000	3	1010	30	35	32	106	R1	4116	1025	(419.7)	(104.5)
SUR4 -1000	4	1010	40	45	41	80	R1	7318	1871	(746.2)	(190.8)

Modules 1.5~4 Type F

Catalog No.	Module m	Total length A	Face width B	Height C	Height to pitch line D	Effective No. of teeth	Shape	Allowable force (N) NOTE 1		Allowable force (kgf)	
								Bending strength	Surface durability	Bending strength	Surface durability
SURF1.5-1000	1.5	999.03	15	20	18.5	212	R1	1029	236.8	(104.9)	(24.15)
SURF2 -1000	2	1005.31	20	25	23	160	R1	1829	436	(186.5)	(44.46)
SURF2.5-1000	2.5	1005.31	25	30	27.5	128	R1	2859	698.3	(291.5)	(71.21)
SURF3 -1000	3	999.03	30	35	32	106	R1	4116	1025	(419.7)	(104.5)
SURF4 -1000	4	1005.31	40	45	41	80	R1	7318	1871	(746.2)	(190.8)

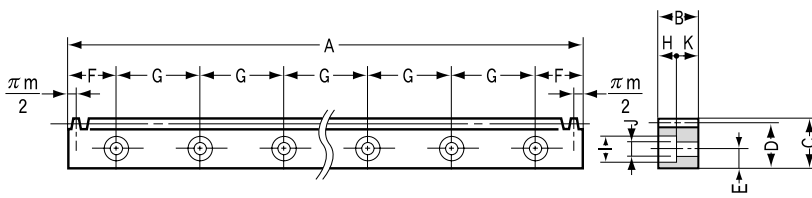
Modules 1.5~4 Type D

Catalog No.	Module m	Total length A	Face width B	Height C	Height to pitch line D	Effective No. of teeth	Mounting hole dimensions NOTE 2			No. of mounting holes	Mounting screw size
							E	F	G		
SURFD1.5-1000	1.5	999.03	15	20	18.5	212	8	49.52	180	6	M 5
SURFD2 -1000	2	1005.31	20	25	23	160	10	52.66	180	6	M 6
SURFD2.5-1000	2.5	1005.31	25	30	27.5	128	12	52.66	180	6	M 8
SURFD3 -1000	3	999.03	30	35	32	106	14	49.52	180	6	M10
SURFD4 -1000	4	1005.31	40	45	41	80	18	52.66	180	6	M12

* The blue catalog number designates a new product.

NOTE 1: The allowable forces shown in the table are the calculated values according to the assumed usage conditions. Please see page 155 for more details.

NOTE 2: The dimensions "E" and "F" have the general tolerance. We recommend that you secure the rack after assembly by means of dowel pins.



R1 Shape (Type D)

Specifications

Precision grade	KHK R 001 grade 5
Gear teeth	Standard full depth
Pressure angle	20°
Material	SUS304
Heat treatment	Solution heat treatment
Tooth hardness	Less than 187HB
Surface treatment	Passivation
Tooth surface finish	Cut
Datum reference surface for gear cutting	Bottom surface
Secondary Operations	Possible

Weight (kgf)	Catalog No.
0.42	SUR1 - 500
1.2	SUR1.5- 500
1.8	SUR2 - 500
2.7	SUR2.5- 500
3.8	SUR3 - 500
6.6	SUR4 - 500
2.2	SUR1.5-1000
3.6	SUR2 -1000
5.3	SUR2.5-1000
7.6	SUR3 -1000
13.1	SUR4 -1000

Weight (kgf)	Catalog No.
2.2	SURF1.5-1000
3.7	SURF2 -1000
5.5	SURF2.5-1000
7.6	SURF3 -1000
13.1	SURF4 -1000

Counterbore dimensions				Shape	Allowable force (N) <small>NOTE 2</small>		Allowable force (kgf)		Weight (kgf)	Catalog No.
H	I	J	K		Bending strength	Surface durability	Bending strength	Surface durability		
6	10	6	9	R1	1029	236.8	(104.9)	(24.15)	2.1	SURFD1.5-1000
7	11	7	13	R1	1829	436	(186.5)	(44.46)	3.5	SURFD2 -1000
9	14	9	16	R1	2859	698.3	(291.5)	(71.21)	5.3	SURFD2.5-1000
11	17.5	11	19	R1	4116	1025	(419.7)	(104.5)	7.2	SURFD3 -1000
14	20	14	26	R1	7318	1871	(746.2)	(190.8)	12.7	SURFD4 -1000